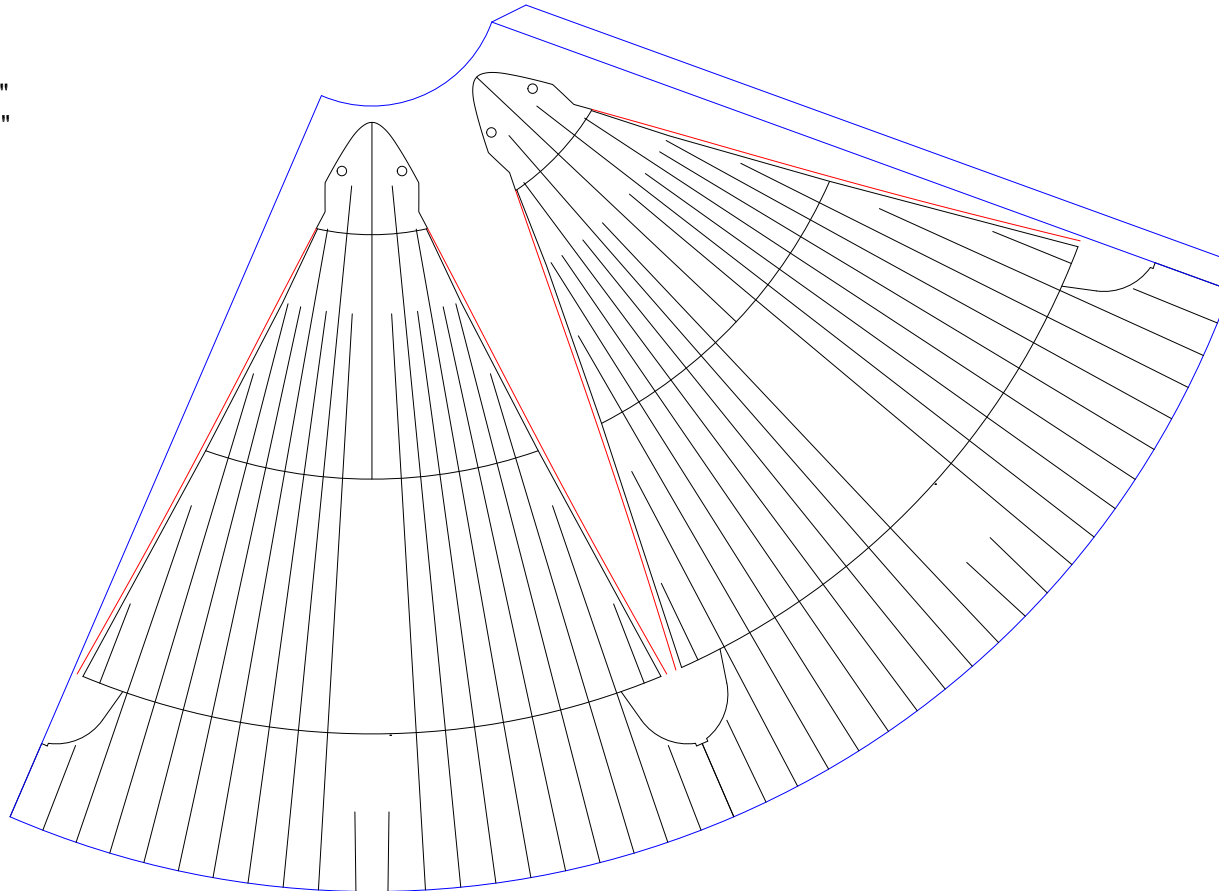


Blue outline is pattern for forming cone which can be used for fabricating two properly scaled fairings. A tab is also represented for printing, cutting from card stock, and gluing using the tab to form a cone.

Each segment on this bar should measure 1" when printed. Bar is 5" overall.

Each segment on this bar should measure 1" when printed. Bar is 5" overall.

Red lines along sides of fairings represent the edge of the fairings if they rested directly on the tops of the S-IC thrust structure stringers. The black edge just inside of the red line is the true fairing edge which represents the fairing clearance over the stringers (this clearance is covered by a fairing on the actual vehicle).



1/100 Scale